

**ADGRG6 / GPR126 Antibody (Internal)**  
**Rabbit Polyclonal Antibody**  
**Catalog # ALS10435****Specification**

---

**ADGRG6 / GPR126 Antibody (Internal) - Product Information**

Application	IHC-P
Primary Accession	<a href="#">Q86SQ4</a>
Reactivity	Human, Mouse
Host	Rabbit
Clonality	Polyclonal
Calculated MW	137kDa KDa
Dilution	IHC-P~~N/A

**ADGRG6 / GPR126 Antibody (Internal) - Additional Information****Gene ID** 57211**Other Names**

G-protein coupled receptor 126, Developmentally regulated G-protein-coupled receptor, Vascular inducible G protein-coupled receptor, GPR126, DREG, VIGR

**Target/Specificity**

Human GPR126. BLAST analysis of the peptide immunogen showed no homology with other human proteins.

**Reconstitution & Storage**

Long term: -70°C; Short term: +4°C

**Precautions**

ADGRG6 / GPR126 Antibody (Internal) is for research use only and not for use in diagnostic or therapeutic procedures.

**ADGRG6 / GPR126 Antibody (Internal) - Protein Information****Name** ADGRG6 ([HGNC:13841](#))**Synonyms** DREG, GPR126, VIGR**Function**

G-protein coupled receptor which is activated by type IV collagen, a major constituent of the basement membrane (By similarity). Couples to G(i)-proteins as well as G(s)-proteins (PubMed:<a href="http://www.uniprot.org/citations/24227709" target="\_blank">24227709</a>). Essential for normal differentiation of promyelinating Schwann cells and for normal myelination of axons (PubMed:<a href="http://www.uniprot.org/citations/24227709" target="\_blank">24227709</a>). Regulates neural, cardiac and ear development via G-protein- and/or N-terminus- dependent signaling (By similarity). May act as a receptor for PRNP which may promote myelin homeostasis (By similarity).

**Cellular Location**

Cell membrane; Multi-pass membrane protein. Note=Detected on the cell surface of activated but not resting umbilical vein

**Tissue Location**

Expressed in placenta and to a lower extent in pancreas and liver. Detected in aortic endothelial cells but not in skin microvascular endothelial cells.

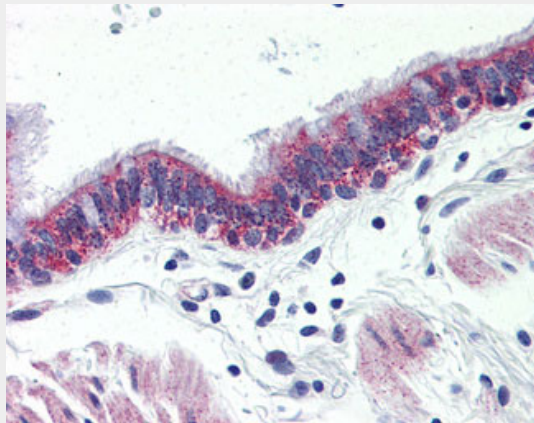
**Volume**

50  $\mu$ l

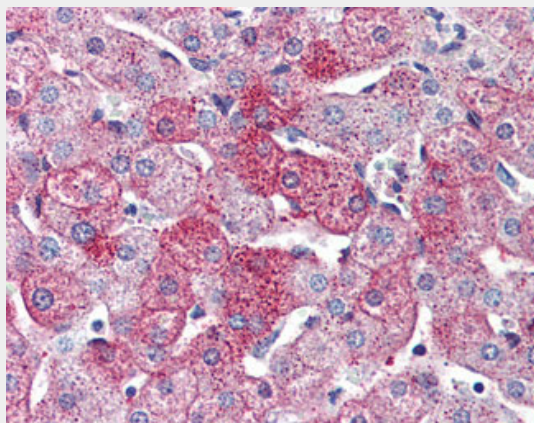
**ADGRG6 / GPR126 Antibody (Internal) - Protocols**

Provided below are standard protocols that you may find useful for product applications.

- [Western Blot](#)
- [Blocking Peptides](#)
- [Dot Blot](#)
- [Immunohistochemistry](#)
- [Immunofluorescence](#)
- [Immunoprecipitation](#)
- [Flow Cytometry](#)
- [Cell Culture](#)

**ADGRG6 / GPR126 Antibody (Internal) - Images**

Anti-GPR126 antibody ALS10435 IHC of human lung, respiratory epithelium.



Anti-GPR126 antibody ALS10435 IHC of human liver.

#### **ADGRG6 / GPR126 Antibody (Internal) - Background**

Orphan receptor. May be required for normal differentiation of promyelinating Schwann cells and for normal myelination of axons. Signals probably through G-proteins to transiently elevate cAMP levels (By similarity).

#### **ADGRG6 / GPR126 Antibody (Internal) - References**

Stehlik C.,et al.FEBS Lett. 569:149-155(2004).  
Moriguchi T.,et al.Genes Cells 9:549-560(2004).  
Bechtel S.,et al.BMC Genomics 8:399-399(2007).  
Mungall A.J.,et al.Nature 425:805-811(2003).  
Ota T.,et al.Nat. Genet. 36:40-45(2004).